



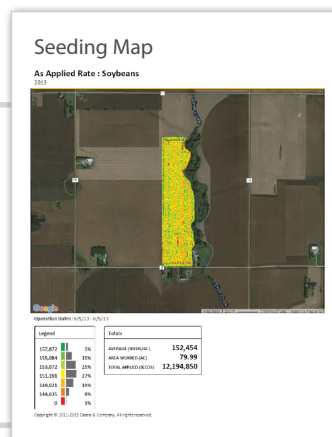
6785 Westown Parkway
West Des Moines, Iowa 50266
800.247.5248 | www.fmh.com

Experience an easier claims process by utilizing your precision farm equipment. Crop insurance claims using precision data can be processed more efficiently, allowing for a faster claim payment.*

If you've recorded precision data while planting and harvesting, only a few pieces of documentation are needed to complete your claim:

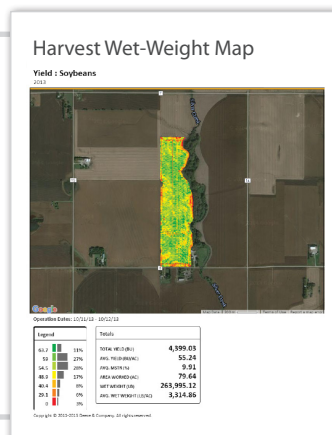
Seeding measured rate maps or seeding field summary are required. The report needs to include the word “seeding”, and include the crop, plant date, acres planted, and variable rate along with the farm name and information. (A larger seeding measured rate maps may be requested to clarify the thumbnail maps.)

Example



Harvest wet-weight maps or harvest field summary are required. The report needs to include the crop, harvest date, acres harvested, total wet weight, average moisture, along with the farm name and information. (A larger wet weight map may be requested to clarify the thumbnail maps.)

Example



Proper calibration is important to get the most accurate measurements from your precision farming equipment. Calibration processes vary by equipment, so follow your manufacturer's instructions.

You may provide FMH's Calibration Report where calibration is recorded manually (shown at right) or software generated for each crop.

Reports must show the machine was calibrated within **3%** of machine displayed weight compared to scale measured weight.

[illegible]

Example: Calibration reports available through your agent.